

A photograph of a modern building's exterior courtyard. The scene features a series of wide, light-colored concrete steps leading up to a brick wall. A dark metal railing with vertical bars runs along the top of the brick wall. The lighting is dramatic, with strong shadows cast across the steps and the wall, suggesting a low sun position. The overall aesthetic is clean and architectural.

Porteur

Cargo Catalogue

Porteur

210 CHURCH RD,
HOVE,
BN3 2DJ

workshop@porteur.co.uk

01273 773 595

Porteur

Cargo Bike Collection

YOONIT

*The next
level compact cargo bike*

4 - 17



Larry vs Harry

*The Bullitt construction was, and still is,
revolutionary*

18 - 31



OMNIM

Something for everyone.

32 - 43



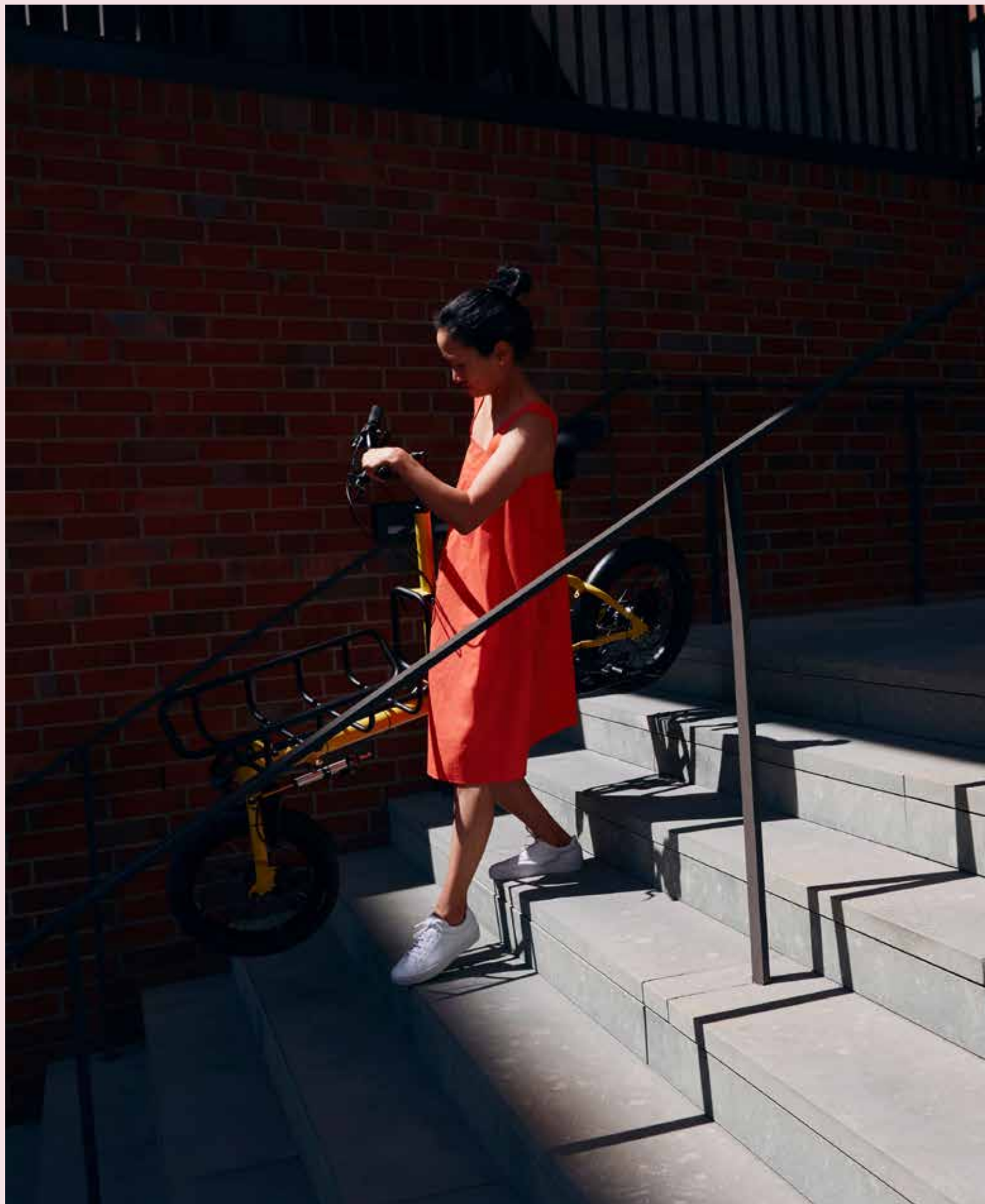
HAGEN®

Steel is Real, with big carrying capacity

44 - 59



*These are just our suggested specs, chat
to us today and we can customise your
perfect model, plus advise on the right
accessories for your needs.*





YOONIT

*the next
level cargo
bike*

Switch your carrier in seconds

Go, Shorty!

With a length of 177.5 cm the YOONIT Mini Cargobike is shorter than a regular bike. It fits into elevators and can be stored easily in the basement, garage or even your apartment.

What makes YOONIT different? Switch the carrier! Thanks to three quick releases, different load carriers can be assembled quickly without tools.

It takes only a few seconds to transform your YOONIT Mini Cargobike from a family vehicle to a load monster.

YOONIT is a compact, agile and lightweight Mini Cargobike.

Teamed with unlimited cargo flexibility due to the fast switch of load carriers with quick releases. Supported by a EP8 Shimano drive unit for a powerful, electric ride.







Mini cargo classic with the smart carrier.

The YOONIT Classic is a compact, lightweight Mini Cargobike that offers special riding fun with various load carriers. The frame geometry is king and results in agile and easy handling. The steering behaviour is optimally adjustable by a steering damper to ensure a smooth ride.

Upside Position

Whether you wish to carry luggage for a spontaneous camping trip, groceries or sports stuff. You will find the perfect solution with the YOONIT Smart Carrier. In the upside position, the long sides are limited by the upper strut – bottle crates fit in perfectly and bags or backpacks do not slip.

Downside Position

With the downside position the YOONIT Smart Carrier offers a simple and effective setup with infinite options for different sized cargo. Basically you can transport everything with this carrier, because any cargo can be fixed with straps. We call it the load monster.

Lightweight for heavy duties

The YOONIT Smart Carrier is our lightest load carrier and weighs only 2 kg. It is sturdy, made from powder-coated aluminum and is manufactured in Europe. Max. payload 63 kg.



Smart Carrier
Length 65cm Width 35 cm

Frame

YOONIT Classic
CrMo tubular steel

Sizing

One size fits all

Power

Your Legs

Shifting

Shimano Alfine 8-speed internal geared hub, available with chain or with belt drive (as shown)

Wheelset

Rear Wheel 18" (355 mm), 36 hole
Front Wheel 16" (305 mm) 36 hole
Both double wall aluminium rims

Max Load Capacity

Max rider weight 100kg
Max Payload 85Kg
Total 190 kg

Bike weight

21kgs

Bike Dimensions

Length 177.5 cm / Width 60cm

Prices from £3010 with chain,
(excluding accessories)



The Family Carrier

Cycling with kids, dog or groceries.
Carry what you love.





Mini cargo classic with the family carrier.

The YOONIT Classic is a compact, lightweight Mini Cargobike that offers special riding fun with various load carriers. The frame geometry is king and results in agile and easy handling. The steering behaviour is optimally adjustable by a steering damper to ensure a smooth ride.

Multi-functional

The YOONIT Family Carrier offers a lot of space for weekend groceries or daily errands. A child seat can be added for the safe transport of one or two kids. A dog can also be transported easily. Here is to a setup for a carefree way to get things done and putting the car in second place.

The Minivan Option

The YOONIT Family Carrier is made of a powder-coated aluminium frame with base plate and a water-repellent CORDURA® inlay, manufactured in Europe.

Equipped with the child seat, up to two small kids can sit side by side. Two five-point seat belts and the padded seat support a safe ride. Optionally, only one belt can be attached in the middle. The YOONIT Child Seat is made of water-repellent CORDURA® fabric and manufactured in Germany.



Family Carrier
Length 78cm Width 38-52cm

Frame

YOONIT Classic
CrMo tubular steel

Sizing

One size fits all

Power

Your Legs

Shifting

Shimano Alfine 8-speed internal geared hub, with Gates belt drive (as shown)

Wheelset

Rear Wheel 18" (355 mm), 36 hole
Front Wheel 16" (305 mm) 36 hole
Both double wall aluminium rims

Max Load Capacity

Max rider weight 100kg
Max Payload 85Kg
Total 190 kg

Bike weight

21kgs

Bike Dimensions

Length 177.5 cm / Width 60cm

Prices from £3350 with Gates Belt
(excluding accessories)





e.YOONIT — electric

Sporty Power Pack

The e.YOONIT is a compact, agile cargo bike that offers electrifying riding fun and a smooth yet powerful performance with the SHIMANO EP8 motor.





e.Yoonit Mini E-cargo Job

The e.YOONIT is a compact, lightweight Mini E Cargobike that offers special riding fun with various load carriers. The e.YOONIT is a compact, agile cargo bike that offers electrifying riding fun and a smooth yet powerful performance with the SHIMANO EP8 motor.

Flexible cargo area

The sturdy YOONIT Job Carrier can be equipped with adapters for attaching systainer boxes or for an individual transport solution: lockable boxes, bags or any goods you can think of. Almost unlimited opportunities.

Customized solutions

The thoughtfully arranged recesses offer convenient and almost limitless transport solutions. The YOONIT Job Carrier is a perfect fit for urban professionals.

Job Carrier

The YOONIT Job Carrier is a sturdy platform, UV-resistant and manufactured in Germany. Weight 5 kg, max. payload 60 kg



Power/Motor

Your Legs + Shimano EP8 (85 Nm)

Range

80km

Charging Time

80% in 2 hours
Full charge in 4

Frame

e.YOONIT Classic
CrMo tubular steel

Sizing

One size fits all

Shifting

Shimano Nexus Inter-5e internal geared hub with chain or belt drive (as shown)

Wheelset

Rear Wheel 18" (355 mm), 36 hole
Front Wheel 16" (305 mm) 36 hole
Both double wall aluminium rims

Max Load Capacity

Max rider weight 100kg
Max Payload 85Kg
Total 190 kg

Bike weight

27kgs

Bike Dimensions

Length 177.5 cm / Width 60cm

Prices from £4970 with chain,
(excluding accessories)



e.Yoonit Mini E-cargo Base

The e.YOONIT with a smooth yet powerful performance of the SHIMANO EP8 motor. Plus the carrying capacity and professional range of accessories compatible with the YOONIT Base!

No Limits

The YOONIT Base Carrier is the loading area for various types of boxes. They can be attached horizontally according to the desired type of use. Recesses on the loading area allow the use of straps, lashing or airline rails, locking bolts or screw connections. A transport container can thus be easily removable or permanently fixed. The Base Carrier is made of powder-coated aluminium and manufactured in Germany.

Compatible with

- YOONIT Euro System
- YOONIT Thermobox

find more details at

www.yoonitbikes.com/base-carrier

YOONIT BASE

From delivering large half pallets and Euroboxes, to keeping hot food and groceries at the right temperature the Base is the professionals choice.



Power/Motor

Your Legs + Shimano EP8 (85 Nm)

Range

80km

Charging Time

80% in 2 hours

Full charge in 4

Frame

e.YOONIT Classic
CrMo tubular steel

Sizing

One size fits all

Shifting

Shimano Nexus Inter-5e internal geared hub with chain or belt drive (as shown)

Wheelset

Rear Wheel 18" (355 mm), 36 hole
Front Wheel 16" (305 mm) 36 hole
Both double wall aluminium rims

Max Load Capacity

Max rider weight 100kg
Max Payload 85Kg
Total 190 kg

Bike weight

27kgs

Bike Dimensions

Length 177.5 cm / Width 60cm

Prices from

£5310 with Gates belt,

(excluding accessories)



YOONIT

find more details at







BULLITT®

By Larry in Harry

THE BEST FAMILY TRANSPORT IN THE UNIVERSE

for more information, check out earthlink at larryinharry.com

BULLITT®

- yet another design classic

BULLITT®

By Larry in Harry

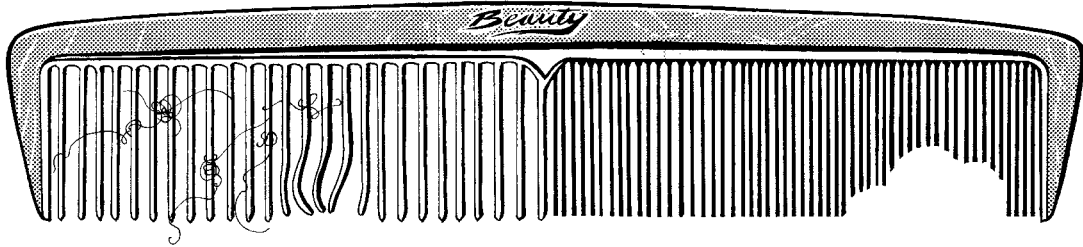
THE BEST MESSENGER BIKE IN THE UNIVERSE

for more information, check out earthlink at larryinharry.com

BULLITT®

The choice of the thinking (wo)man

Larry vs Harry



Larry vs Harry

& the Bullitt Cargobike

Larry vs Harry are owned and operated by Lars Malmberg and Hans Fogh, who are helped by a dedicated bike and riding loving team. The foundation of their working relationship and continuing innovation, was, and still is, their uncompromising dedication to quality and it is this that carries the success of the Bullitt.

BULLITT®
COPENHAGEN

The Bullitt construction was, and still is, revolutionary.

The cargo area on a Bullitt is a part of the frame construction and differentiates itself from other models, as their cargo boxes are primarily mounted onto the frame. The benefits of this method are numerous, primarily, that despite only weighing 22kg, the complete Original Bullitt is rated to carry 180kg. Yet, unlike many other cargo bikes, the Bullitt is compact and in profile it is only as wide as a regular bicycle.

When the Bullitt was released on an unsuspecting world in 2008, it was totally revolutionary and set new standards in the bike world. Since then, it has won World-, European- and numerous National Championships in its class, and been through rigorous testing to ensure its position as the king of cargo bikes.

eBULLITT®
COPENHAGEN

Cargo bikes are the future

Cycling has many health benefits and cargo bikes are a sustainable, quicker alternative to other vehicles in urban contexts. Forget trying to find a parking space and paying for the privilege. In 2015, Larry vs Harry introduced an electrically assisted Bullitt, based around Shimano's powerful and beautifully integrated STePS system. In this bike, you have a tool with simply so many benefits and arguments for dropping petrol powered aspirations. Effortless and extremely practical is the best way of describing the STePS eBullitt.





BULLITT®
COPENHAGEN

The OG Pedal Powered Bullitt

The Original Bullitt frame is the natural progression in Danish cargo bike design and as Copenhageners we ride every day, through all seasons. Larry vs Harry have been making the Bullitt and nothing but the Bullitt for well over a decade.

This time has been spent refining and improving what we see as the perfect do-it-all cargo bike. The Bullitt is a bicycle for everyone and everything.

Slim. Agile. Lightweight

Fast and easy to maneuver, the Bullitt's unique stiff, three dimensional frame construction and geometry ensure stability at speed and over a variety of surfaces.

Its slim cargo platform functions well in navigating narrow bicycle lanes and plays nicely when sharing the road with other road users.

Frame

OG Bullitt
7005/T6 Bullitt Frame
Heat treated aluminium

Sizing

One size fits all

Power

Your Legs

Shifting

2 x 10 Shimano Deore

Max Load Capacity

Total 180 kg

Bike weight

22.3 kgs

Bike Dimensions

Length 2430mm / Width 460mm

Prices from £3387 with chain,

(excluding accessories)



The Everyday Electric

Further. Faster

The eBullitt can take a huge amount of cargo. Using our 2 powerful Shimano motors, getting a boost off the line, up steep hills, or over long journeys can make carrying any cargo a breeze

Go Anywhere

The Shimano system provides up to 110km* of power assist. The battery can be removed and charged within 1 hour to 50%, 2 hours to 80% and 4 hours 100%.

The Flexible Workhorse

Utility, flexibility and practicality
The 6100 motor offers the same flexibility in gearing and adaptability as the Bullitt itself, choose between internal 5 and 11 speed options or a derailleur based 11 speed external system.

250watt with 60 newton meters of torque to bring you quickly and effectively up to speed. The Shimano STePS 6100 motor is one of the smallest and lightest offerings on the market, weighing just 2.8 kg. Beautiful integration with Shimano's industry leading crisp gear shifting and smart firmware support via Shimano's bluetooth compatible etube platform.

Frame

7005/T6 eBullitt Frame
Heat treated aluminium

Sizing

One size fits all

Shifting

Shimano Nexus 5 speed di2

Max Load Capacity

180 kg

Bike weight

from 28kgs

Bike Dimensions

Length 2430mm / Width 460mm

Power/Motor

Your Legs + Shimano e6100
(60 Nm) - 250w - 36volt

Battery

Shimano Steps 418Watts

Range

up to 90km

Charging Time

80% in 2 hours
Full charge in 4

Lights

Busch & Müller, Secula(front),
Secuzed (rear) - Included

Prices from

from £5830 (excluding accessories)



The Family Electric

Built to Last

The Bullitt frame and components have been built and tested to the highest standards currently available within the bicycle industry.

All our Larry vs Harry Original components and accessories have undergone rigorous test periods both pre production and have been tested over the past decade under some incredible circumstances.

Designed For Safety

The Bullitt is designed and developed with safety at the forefront and extends to both rider and cargo however precious. Inherent stability through good design and a comprehensive accessory range that enhance and compliment safety features.

We run stress tests on the Bullitt frame

Accessories designed for use with children hold their comfort and safety in the highest regard, and we have spent over a decade refining, testing and improving our line up with the feedback of our staff, customers and dedicated dealers.

the Canopy

Our tried and tested line of accessories like the Canopy with its steel frame and sidebars ensure child safety whilst the construction of our BBX Sidepanel Kit and Honeycomb Board consists of an advance aluminium lattice which maintain rigidity and stiffness. The fabrics and materials of all our accessories have been certified for use with children and we are proud of our continuing commitment to the Bullitt being the safest and most secure cargo bike on the market.

Frame

7005/T6 eBullitt Frame
Heat treated aluminium

Sizing

One size fits all

Shifting

Shimano Nexus 5 speed di2
Gates Belt Drive

Max Load Capacity

180 kg

Bike weight

from 28kgs

Bike Dimensions

Length 2430mm / Width 460mm

Power/Motor

Your Legs + Shimano e6100
(60 Nm) - 250w - 36volt

Battery

Shimano Steps 418Watts

Range

up to 90km

Charging Time

80% in 2 hours
Full charge in 4

Lights

Busch & Müller, Secula(front),
Secuzed (rear) - Included

Prices from

from £6110 (excluding accessories)



Ready for Business

With the EP8 The Powerhouse

85 Nm of Torque
Powerful, adventuring, and quiet

The EP8 is the result of many years development and brings Shimano's wealth of experience in cycling engineering into a small, powerful and fantastic functioning flagship eBullitt. Both massively powerful and beautifully engineered, the engine provides a fantastic and naturel transfer of power, just when you -the rider- require it.

250watt with an incredibly grunty 85 newton meters of torque, the EP8 represents the pinnacle of electricly assisted bikes and it's strength makes it a fantastic contender for cargo riding. Less drag due to a change in seals and software updates from previous iterations, the EP8 rolls smoothly and incredibly efficiently. Coupled with fantastic shifting courtesy of XT Di2, the electronic gears change with precision and low maintenance time and time again.

Bigger

Shimano STePS 504w
Up to 100 km in Eco mode*

High capacity long-lasting Li-Ion battery of 504 Wh to cover more territory. Supported travel up to 100 km on one charge. 1000 charge cycles with no significant power loss. Boost: 50 km (400 hm) Trail: 75 km (600 hm) Eco: 100 km (800 hm)

Business Solutions

The benefits of making the transition to a Bullitt for work purposes are tenfold. More effective, more satisfying and savings both economically and environmentally for your business. With a host of options and solutions, there is a Bullitt for you.

eBULLITT®
COPENHAGEN

Frame

7005/T6 eBullitt Frame
Heat treated aluminium

Sizing

One size fits all

Shifting

Shimano Nexus 5 speed di2
bt -8010

Max Load Capacity

180 kg

Bike weight

from 28kgs

Bike Dimensions

Length 2430mm / Width 460mm

Power/Motor

Your Legs + Shimano ep8
(85 Nm) - 250w - 36volt

Battery

Shimano Steps 504 Watts

Range

up to 110km (eco mode)

Charging Time

80% in 2 hours
Full charge in 4

Lights

Busch & Müller, Secula(front),
Secuzed (rear) - Included

Prices from

from £6822 (excluding accessories)



Get the colour you want.

There are several standard colour options for your Bullitt. You can choose from any of the 8 factory colours or choose a Raw aluminium finish for non eBullitts only.



Pepper - Ral 2002



Submarine - Ral 1023



Bluebird - Ral 5012



Race - Ral 6028



Clockwork - Ral 2003



Lizzard King - Ral 6037



Indigo - Ral 5026



Sugar - Ral 8011



LARRY VS HARRY





find more details at







OMNIUM

OMNIUM

OMNIUM

Founder Jimmi "Jumbo" Bargisen has been a bike messenger since 2002. He knew a thing or two about what he wanted out of a bike, how it should ride, and what it should be capable of, so in 2012, he designed his dream bike, and Omnium came to be.

The first prototypes are strikingly similar to what you see in our lineup today, however their application and relevance continue to evolve with the increased acceptance and need for cargo bikes in our everyday lives. This is ultimately what has gotten us this far, and we feel incredibly humbled to be a part of this movement.



Omnium Mini Wifi

The Omnium Mini WiFi stands for Wide Fit. Want more comfort, better grip, and increased stability?

The new WiFi sports 55mm tires on their respective ISO 406 and 622 rims, as well as thru axles front and rear. WiFi is the future!

The Mini almost speaks for itself.

It's a normal bike with a front rack on steroids!

Its manageable size makes handling familiar, and multimodal transportation a breeze. The rack is ideal for getting around with a load too big for a backpack, and perfect for putting it out front where you can keep an eye on it.

Significant loads on the Mini are a non-issue as long as they are more or less kept within the rack's size. The weight of the load has very little influence on steering, giving you surprising amounts of confidence, as the rack's support is built directly into the frame.

We like to think this is the most playful cargo bike out there!

Frame

Mini Wifi

Sizing

5 Sizes available

Power

Your Legs

Shifting

SRAM apex 11 speed chain

Max Load Capacity

Total 125 kg

Bike weight

17.5 kgs

Bike Dimensions

Length 1658mm

Prices from £2300 with chain,

(excluding accessories)



OMNIGUM





Omnium Mini Max Wifi

The Omnium Mini-Max is a fast, light, adjustable and manoeuvrable cargo bike. It's like the classic Omnium Cargo but with a shorter and more compact wheelbase for snappier turns and smaller parking spots. Add our nylon cargo webbing to provide a super-strong surface that can hold crazy loads all day long. We also have a cunning extender bar that slides trombone-like into the rack to give you absurd levels of cargo power.

It rides like a normal bike!

Unlike some other cargo bikes on the market – ours feel pretty much exactly like a normal bike to ride. Not twitchy, not shaky, but agile and speedy. You'll adapt in minutes and wonder how you survived without Omnium in your life.

Frame

Mini Max Wifi

Sizing

5 Sizes available

Power

Your Legs

Shifting

SRAM apex 11 speed chain

Max Load Capacity

Total 150 kg

Bike weight

19 kgs

Bike Dimensions

Length 2024mm

Prices from £2700 *with chain,*

(excluding accessories)



OMNIUM

The Omnium Mini-Max WiFi stands for Wide Fit. Want more comfort, better grip, and increased stability?

The new WiFi sports 55mm tires on their respective ISO 406 and 622 rims, as well as thru axles front and rear. WiFi is the future!



Titanium Options

The almighty Titanium Omnium is for riders looking to take things to the highest level possible. These beautifully hand crafted frames are a platform for the ultimate dream bike, that simply won't give up.

Titanium's shear strength, comfort and light weight properties are something completely unique, resulting in an incredible ride experience, and the durability to last a lifetime or 10.

The Material

Titanium is an amazing material for bike frames due to its very unique qualities. It simply will not rust in any normal atmospheric conditions, not even with road salt, scratches or dents. It doesn't need painting or coating, and doesn't suffer from fatigue cracking.

It's much lighter than steel, almost 3kg less on a cargo, and still really comfortable to ride with a perfect ratio of stiffness, strength and durability. Of course, it's more expensive than steel, but then again, it will probably outlast the human race. Steel is real, but Titanium is realer!

Interested

Every Omnium model is available in Titanium. Speak to us today about the next batch order.





OMNIM



Omnium E cargo Wifi

You can now get an E-Cargo, E-Mini or E-Mini-Max with integrated Shimano STEPS EP8 Cargo power unit.

The STEPS EP8 is by far the best system for an electric bike – we tested a lot of options and we are certain this is the e-bike that will take you to the very TOP of the hill.

Frame

Omnium E Cargo v3

Sizing

5 Sizes available

Shifting

Shimano Nexus 5 speed di2
Gates Carbon Belt Drive

Max Load Capacity

175kg

Bike weight

from 28kgs

Bike Dimensions

Length 2237mm

Power/Motor

Your Legs + Shimano ep8
(85 Nm)

Battery

Shimano Steps 504 Watts

Range

80km

Charging Time

80% in 2 hours

Full charge in 4

Lights

Busch & Müller, Secula(front),
Secuzed (rear) - Included

Prices from

from £5000 *(excluding accessories)*



The powerful SHIMANO STEPS motor is strong enough to handle the steepest of hills, yet intuitive enough to give you just the right amount of support for every pedal stroke along the way. Designed specifically to give you the natural feel of riding a normal bike.

Weighs only 2.6kg, one of the lightest motors on the market. Stable, smooth intuitive power for improved bike handling over every part of your day. Solidly supports speeds up to 25 km/h



Drivetrain components are designed to work in sync with each other for unparalleled effectiveness and reliability.

Spec'd with Gates Carbondrive chainring, belt, and rear sprocket for a maintenance low, durable, and strong drivetrain. A 165 mm crank arm minimises pedal strikes and maintains smooth cadence and motor assistance.



Lightweight yet rigid crankset for direct power transfer. Both crankset and the rest of the drivetrain are built on SHIMANO's proven technology. This gives you reliability and confidence from first to last pedal stroke.







OMM

find more details at











Real Steel Cargo Bikes

From gravel to road to freestyle riders, steel is the real choice. The flex, durability and riding characteristics are not beaten by any other material. Combined with the simple and sleek lines, it's what puts the smile on the face of any true cargo bike lover and what makes Hagen stand out.



Hagen Flagship E-Cargo

The only bike you will ever need. Top-of-the-range handling and powerful, yet silent, Brose S mag motor makes up for the ultimate commuting experience.

With 70 km battery range, we guarantee a joyful carefree ride. Go anywhere, anytime and in any weather without breaking a sweat.

Designed to carry stuff

The Brose super quiet, top of the line motor gives you so much torque that carrying even the heaviest cargo becomes easy. The cargo bed is large enough to fit everything on your bike, and then some.

Full range of accessories

Our electric motor guarantees 70 km juice of pure ride ecstasy without breaking a sweat. Equip this bike to ride anywhere and in any condition with its wide range of accessories.

Track your routes and your bike wherever it goes, even if you are not riding it (you read that thief?). We know there are no perfect bikes, but this one sure comes close to it.

Frame

Steel Hagen Base Flagship E-cargo

Sizing

2 Sizes available

Shifting

Shimano Deore 10 Speed chain

Max Load Capacity

180 kg

Bike weight

from 38kgs

Bike Dimensions

Length 2476mm

Power/Motor

Your Legs + Brose S Mag 250W
90nm of Torque

Battery

17.5ah

Range

70km

Charging Time

80% in 2.5 hours
Full charge in 4.5 hours

Prices from

from £4890 *(excluding accessories)*



HAGEN®



Everyday E-Cargo Mini

Wake up every morning knowing that you will ride this baby to your destination. Hagen's Mini Cargo bike provides outstanding maneuverability for out-of-this-world riding experience. Swift turns, responsive handling even with heavy loads is why this pedelec bike is for you.

This cargo bike is equipped with a durable Brose S mag motor able to reach 70 km without breaking a sweat.

Low Maintenance

Simple, safe and low maintenance. The Enviolo automatic gear shifting keeps your attention where it needs to be – on the road. The Gates carbon belt drive lets you say good bye to oily marks by keeping your jeans clean and your drivetrain long-lasting.

Long range for long rides

The batteries provide an electric range of 70 km, making the bike suitable for long cargo deliveries. Charging our battery takes 4.5 hours if completely flat and 2.5 hours for 80% charge.

Frame

Steel Hagen Mini E-cargo

Sizing

2 Sizes available

Shifting

Shimano Deore 10 Speed chain

Max Load Capacity

180 kg

Bike weight

from 37kgs

Bike Dimensions

Wheel Base 1845mm

Power/Motor

Your Legs + Brose S Mag 250W
90nm of Torque

Battery

17.5ah

Range

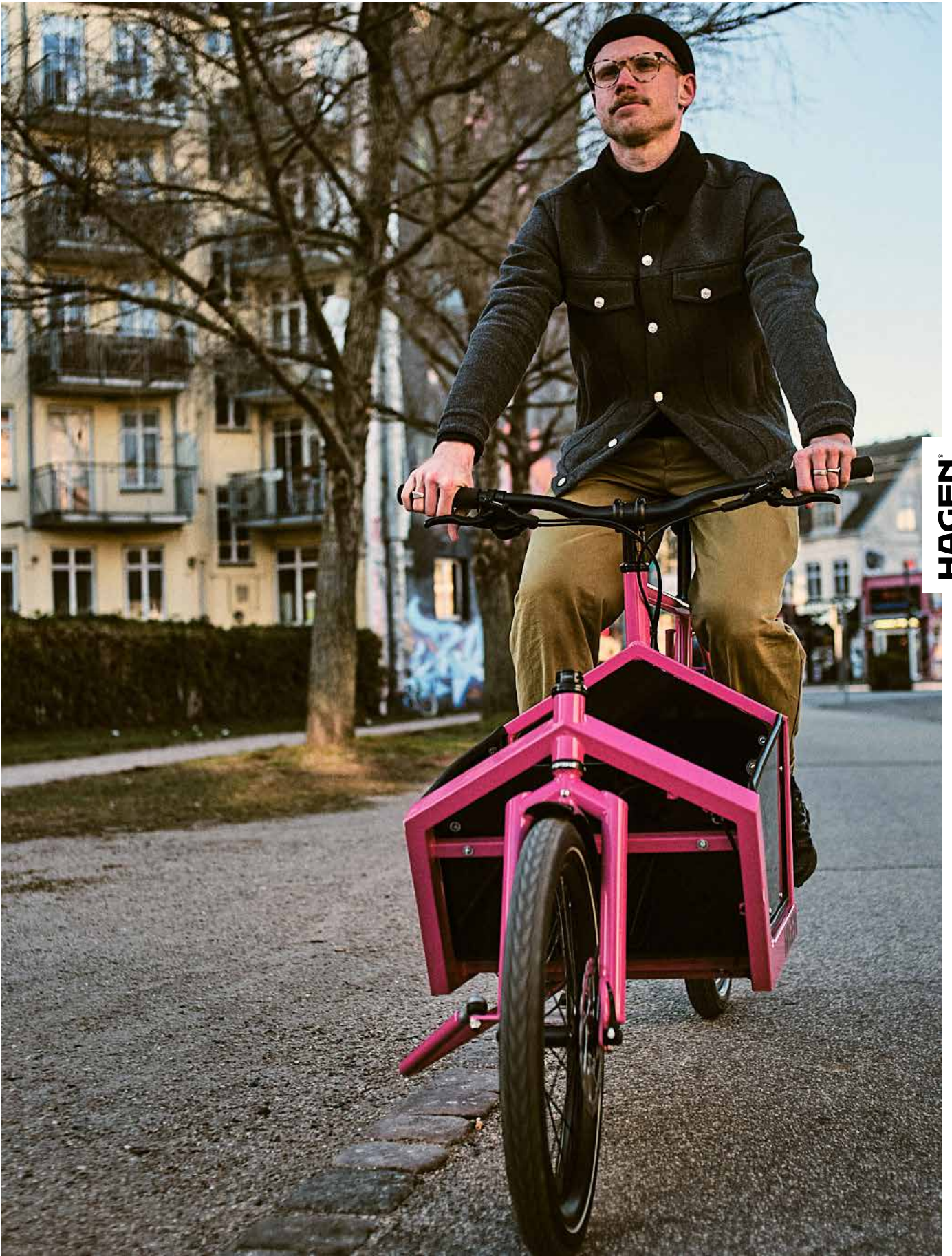
70km

Charging Time

80% in 2.5 hours
Full charge in 4.5 hours

Prices from

from £4840 (excluding accessories)

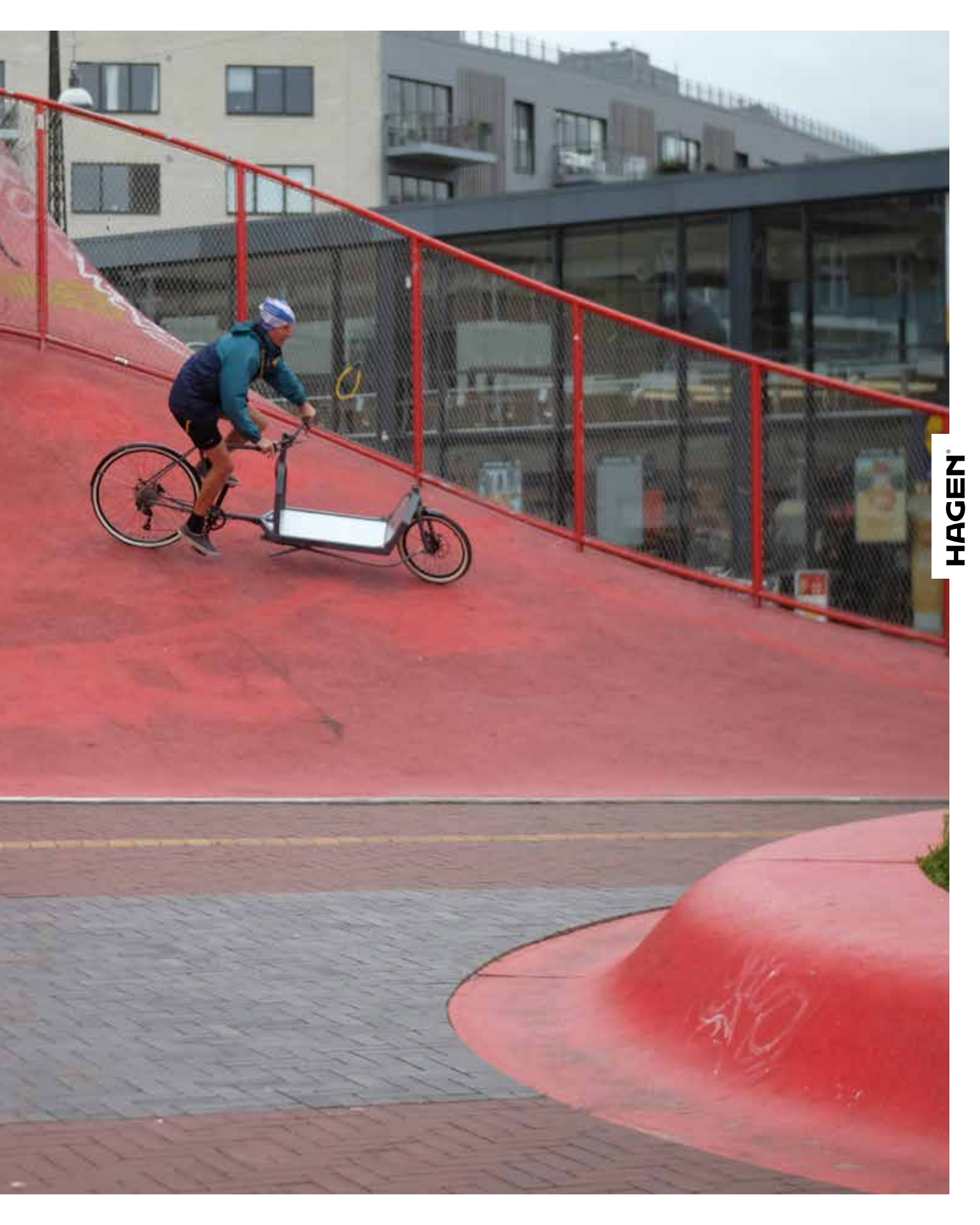


HAGEN®

A person wearing a grey long-sleeved shirt and black pants is riding a cargo e-bike on a red ramp. The ramp is enclosed by a red metal fence. In the background, there is a wall covered in graffiti, including a large blue and white graphic of a face. The ground in the foreground is paved with grey bricks.

***“ This is what an
e-bike really should
be, a legitimate car
replacement.”***

- Cory Benson, *Bike Rumor*



HAGEN®



Everyday E-Cargo Family

The only bike you will ever need for your family. Top-of-the-range handling and powerful, yet silent, Brose S Mag motor makes up for the ultimate commuting experience.

With 70 km battery range, we guarantee a joyful carefree ride. Go anywhere, anytime and in any , carrying everything and everyone you need.

Low Maintenance

Simple, safe and low maintenance
The Enviolo automatic gear shifting keeps your attention where it needs to be – on the road. The Gates carbon belt drive lets you say good bye to oily marks by keeping your jeans clean and your drivetrain long-lasting.

Wide Box

With our widebox you can fit one or two seats. Fit it as you wish - one seat for your little one and another for groceries or 2 kid seats side-by-side or even one small adult and one small child at the same time.

- Fits 2 children or a petite adult and a small child
- 2 seats can be mounted side-by-side or 1 seat in the middle of the box
- The Box is Lightweight at 4.3kgs



Frame

Steel Hagen Base Flagship E-cargo plus Wide Box

Sizing

2 Sizes available

Shifting

Shimano Deore 10 Speed chain

Max Load Capacity

180 kg

Bike weight

from 46kgs *(including accessories)*

Bike Dimensions

Length 2476mm

Power/Motor

Your Legs + Brose S Mag 250W
90nm of Torque

Battery

17.5ah

Range

70km

Charging Time

80% in 2.5 hours
Full charge in 4.5 hours

Prices from

from £5557 *(including accessories)*



HAGEN®





Hagen E-Cargo Business XL

This is our biggest, strongest and most powerful cargo e-bike yet. A rocket on the road that's not for the fainthearted.

Need to haul huge stuff?

No problem. This bike is equipped with the Brose S Mag 90 Nm, 250W allowing maximum drive for heavy hauls. It basically comes with all the best features of the e-cargo Bike, just with extra power and XL size. Go big or go home!

Key Features:

- Room for hauling massive stuff
- Can fit 4 small children
- Can fit an adult with ease

Get your business colours right!

Custom colours let you stand out. Show your personality to the world by getting your bike in any colour from the RAL scale you want.

Two frames sizes

Bikes for people of all heights. Whether you're shorter or taller, the different frame sizes have got you covered. Taller riders get to ride in style without needing to hike the seat post up to the sky.

Frame

Steel Hagen XL E-cargo

Sizing

2 Sizes available

Shifting/Drivetrain

Belt Drive Enviolo

Max Load Capacity

180 kg

Bike weight

from 41.3kgs

Bike Dimensions

Length 2800mm

Power/Motor

Your Legs + Brose S Mag 250W
90nm of Torque

Battery

17.5ah

Range

70km

Charging Time

80% in 2.5 hours
Full charge in 4.5 hours

Prices from

from £6090 *(not including accessories)*



HAGEN®





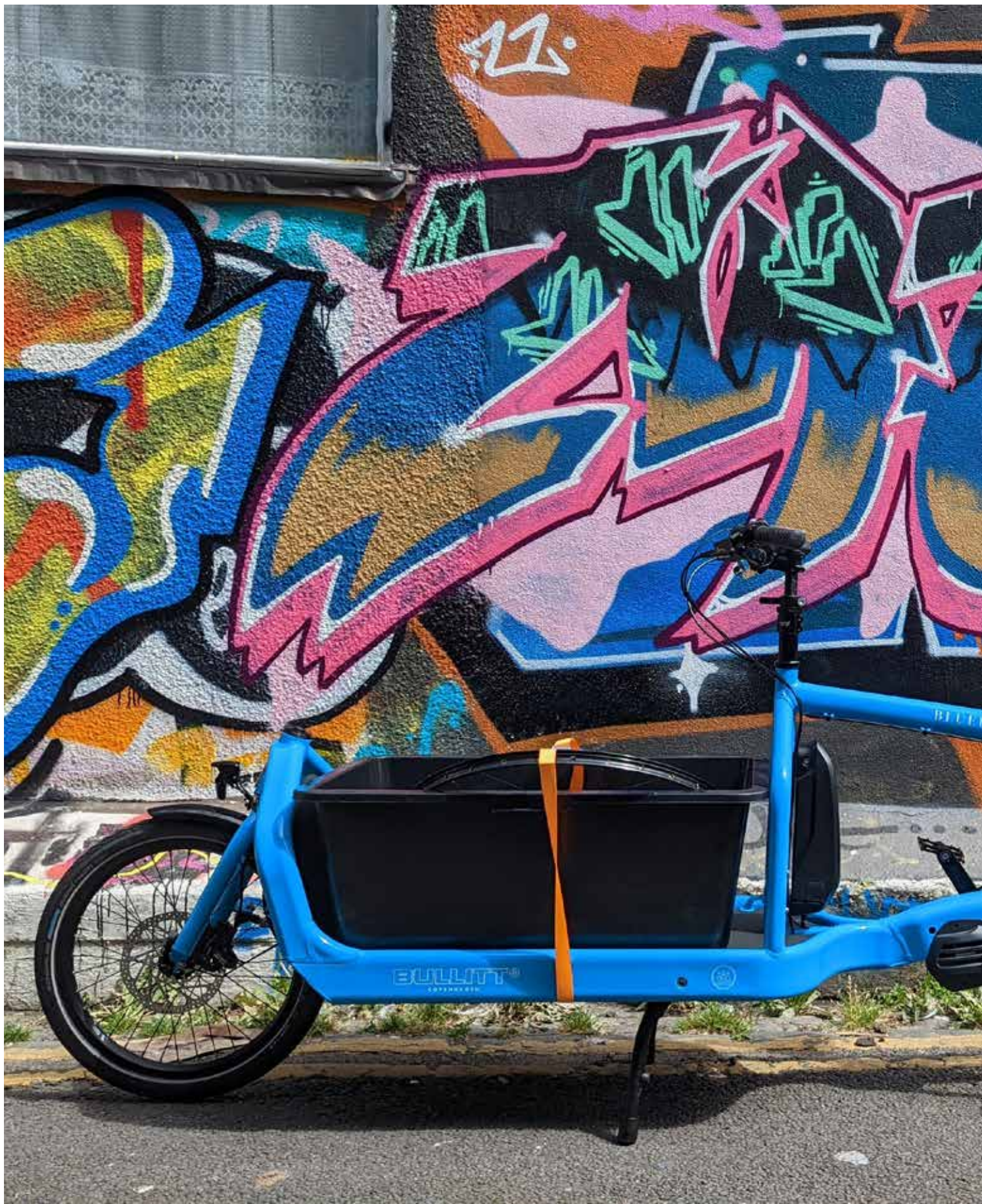

HAGEN®

find more details at





HAGEN®





Custom Specs

These are just our suggested specs, chat to us today and we can customise your perfect model, plus advise on the right accessories for your needs.

210 CHURCH RD,
HOVE,
BN3 2DJ

workshop@porteur.co.uk

01273 773 595

bikes • coffee
Porteur

104405 07370

Porteur
bikes • coffee

RELIABILITY
CONFIDENCE

PORTEUR
DEALERS OF
YONUIT CARGO
HAGEN BIKES
OMNIUM CARGO





About Us

Porteur was founded in 2016 by partners Paul and Kelly.

We offer a superb collection of cargo bikes, both electric and pedal power that we hope will encourage and enable people to loose their second car or ditch their work van.

We have cargo bikes for families, for businesses, for artists and caterers and most importantly for fun!

Our micro business was started on a shoestring with a small but effective workshop and a coffee shop for the weary cyclist. Our aim was always to grow a community of like minded people who agree with our ethos that cycling isn't just for the few elite specialists but for the commuter, the family, the racers, for everyone.

Kelly runs the cafe which has doubled in size and is now a great place to start or finish a ride, watch some racing with a beer or enjoy a slice of well earned slice of cake. Our simple menu is all made from scratch on site and aims to cater to all tastes.

Paul runs the workshop and has developed a reputation as a great mechanic with a fastidious eye for detail. The workshop works on all types of bike from your commuter to your high end race bike, alongside custom bike builds and hand built wheels.

Workshop demands led to Eddie joining the team and now we can tackle twice as much!

Our monthly social rides welcome a great group of riders of all abilities and aim to be inclusive to all.

Porteur

210 CHURCH RD,
HOVE,
BN3 2DJ

workshop@porteur.co.uk

01273 773 595

210 CHURCH RD,
HOVE,
BN3 2DJ

workshop@porteur.co.uk

01273 773 595

Porteur

